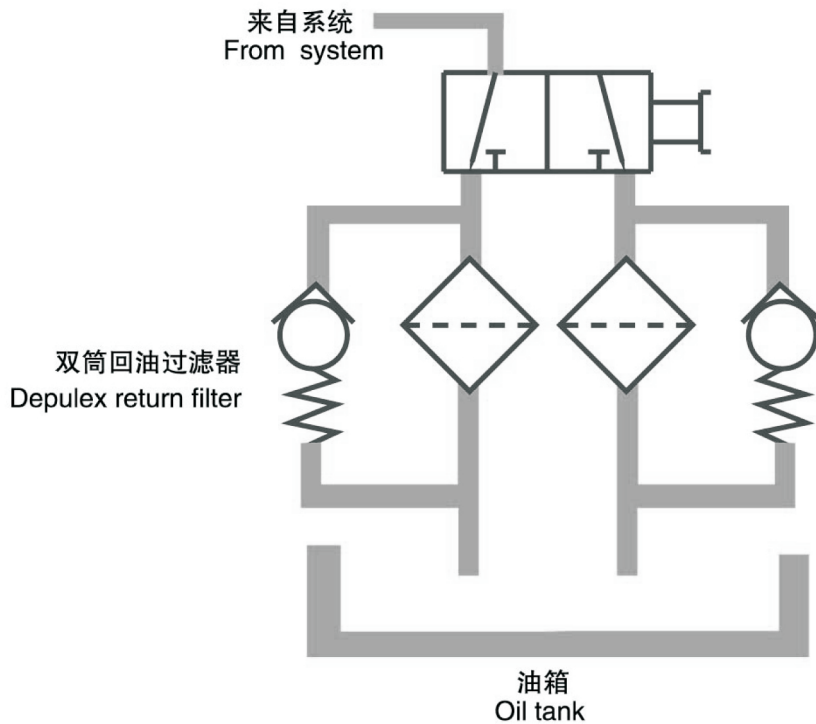


产品液压符号  
Hydraulic symbol



### 性能参数 Specifications

结构形式：双切换油箱顶置	Type of construction: Tank-top, depulex mounted
工作压力：最大16bar	Operating pressure: Max. 16 bar
连接形式：BSPP/M螺纹,SAE法兰	Ports: Threaded BSPP/Metric and flange SAE
密封材料：丁晴橡胶，氟橡胶，	Seal Material: NBR,Viton, EPDM on request
工作温度：-40℃ ~ +120℃	Operating temperature range: -40℃ to +120℃
过滤材料：	Filtration media:
玻纤，滤纸和金属网	glass fibre, cellulose and wire mesh.
滤芯爆破压力：10bar	Element collapse rating: 10 bar (ISO 2941)
旁通阀开启压力：4 bar	Bypass setting: Opening pressure 4 bar
发讯器报警压力：	Indicator options:
压力表	pressure gauge
压力开关3.5 bar	pressure switch 3.5 bar
壳体材料：铝	Filter housing: Aluminium head and cover
工作介质相容性：适用于矿物油，人工合成油， 其它介质咨询公司技术部门。	Fluid compatibility: Suitable for mineral oils, synthetic oils. For use with water, please contact our company.

**订货代码** Ordering Code

**过滤器** The completed filter

RDF 0630 F 010 N F75 V

过滤器型号 Filter type \_\_\_\_\_

流量 Flow rate (L/min) \_\_\_\_\_

0025, 0040, 0063, 0100, 0160, 0250, 0330,  
0400, 0500, 0630, 0800, 1000, 1200

滤芯材料 Element material \_\_\_\_\_

P: 滤纸 Celullose ( $\beta x=2$ ), F: 玻纤 Glass fiber ( $\beta x \geq 200$ ), W: 金属网 Wire mesh

过滤精度 Filtration rating ( $\mu m$ ) \_\_\_\_\_

(F): 002, 005, 010, 020 (P): 010, 025 (W): 040

密封材料 Seals \_\_\_\_\_

N: 丁晴橡胶 NBR, V: 氟橡胶 Viton

接口形式/尺寸 Port type/Size \_\_\_\_\_

流量 Flow Rate	形式/尺寸 Type/Size												
	B(BSPP 管螺纹 thread)					M(公制螺纹 Metric thread)					F(法兰 Flange)		
	8	12	16	18	24	18	27	33	42	48	40	63	90
RDF0025	●					●							
RDF0040		●					●						
RDF0063			●					●					
RDF0100				●					●				
RDF0160					●					●	●		
RDF0250					●					●	●		
RDF0330												●	
RDF0400												●	
RDF0500													●
RDF0630													●
RDF0800													●
RDF1000													●
RDF1200													●
B08=G <sup>1</sup> / <sub>2</sub> , B12=G <sup>3</sup> / <sub>4</sub> , B16=G1, B20=G1- <sup>1</sup> / <sub>4</sub> , B24=G1- <sup>1</sup> / <sub>2</sub>													
M18=M18x1.5, M27=M27x2, M33=M33x2, M42=M42x2, M48=M48x2													
F40=SAE 1- <sup>1</sup> / <sub>2</sub> ", F63=SAE 2- <sup>1</sup> / <sub>2</sub> ", F90=SAE 3- <sup>1</sup> / <sub>2</sub> "													

压差发讯器 Indicators \_\_\_\_\_

N: 无 No, V: 压力表 Pressure gauge E: 压力开关 Pressure switch 4bar

### 订货代码 Ordering Code

### 滤芯 The replacement element

RDE 0630 F 010 N

滤芯型号 Element type \_\_\_\_\_

流量 Flow rate (L/min) \_\_\_\_\_

0025, 0040, 0063, 0100, 0160, 0250, 0330, 0400, 0500, 0630, 0800, 1000, 1200

滤芯材料 Element material \_\_\_\_\_

P: 滤纸Cellulose ( $\beta x=2$ ), F: 玻纤Glass fiber ( $\beta x \geq 200$ ), W: 金属网Wire mesh

过滤精度 Filtration rating ( $\mu m$ ) \_\_\_\_\_

(F): 002, 005, 010, 020 (P): 010, 025 (W): 040

密封材料 Seals \_\_\_\_\_

N: 丁晴橡胶NBR, V: 氟橡胶Viton

### 过滤器主要性能参数 Filter Specification

过滤器 Filter	接口 Ports	滤芯 Element	重量 Weight(Kg)
RDF0025	G <sup>1</sup> / <sub>2</sub> , M18x1.5	RDE0025...	6.20
RDF0040	G <sup>3</sup> / <sub>4</sub> , M27x2	RDE0040...	6.60
RDF0063	G1, M33x2	RDE0063...	8.00
RDF0100	G1- <sup>1</sup> / <sub>4</sub> , M42x2	RDE0100...	8.80
RDF0160	SAE 1- <sup>1</sup> / <sub>2</sub> "	RDE0160...	18.10
RDF0250		RDE0250...	22.40
RDF0330	SAE 2- <sup>1</sup> / <sub>2</sub> "	RDE0330...	27.80
RDF0400		RDE0400...	30.00
RDF0500	SAE3- <sup>1</sup> / <sub>2</sub> "	RDE0500...	34.40
RDF0630		RDE0630...	36.60
RDF0800		RDE0800...	39.20
RDF1000		RDE1000...	42.00
RDF1200		RDE1200...	45.30

### 压降曲线 Pressure Drop Curves

过滤器的压降是壳体的压降加上清洁滤芯的压降。推荐回油过滤器初始压降不大于0.5bar。

如果所使用的工作介质粘度不是32cSt, 实际压降计算如下:

$$\Delta p = (\Delta p_{32} \times \text{工作介质粘度}) / 32\text{cSt}$$

过滤器压降数据是基于工作介质的动力粘度32cSt、密度0.87得到。

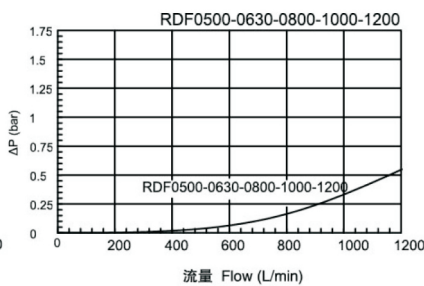
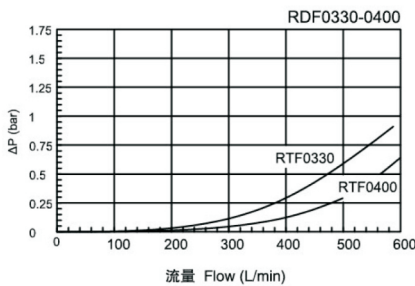
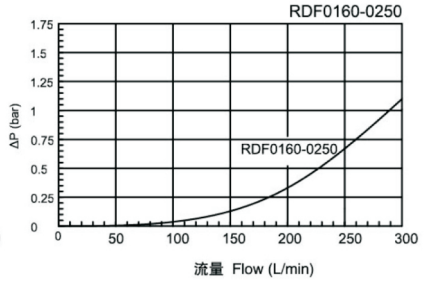
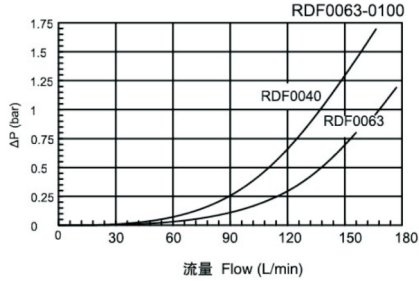
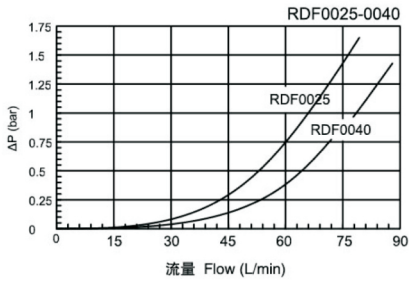
The "Assembly Pressure Drop ( $\Delta P$ ) is obtained by adding the pressure drop values of the filter housing and of the clean filter element and the recommended level of the initial pressure drop for return filter is less than 0.5 bar.

If the medium used has a viscosity different from 32cSt, pressure drop over the filter can be estimated as follows:

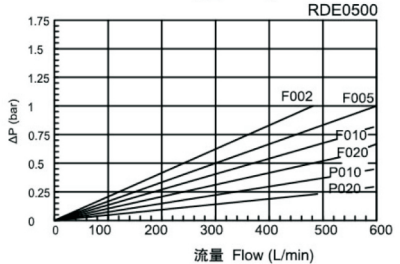
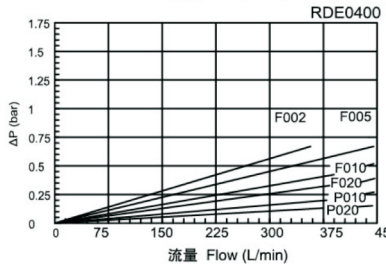
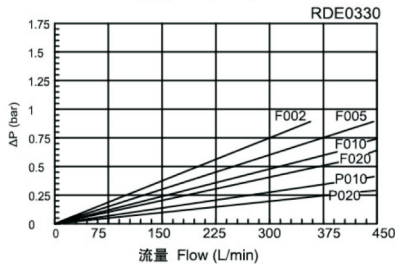
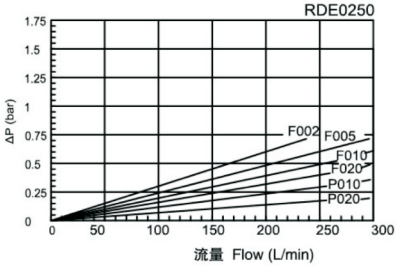
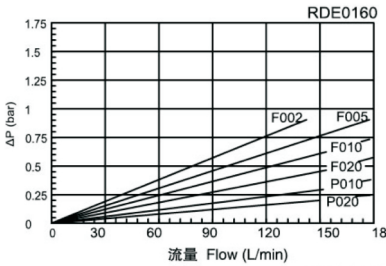
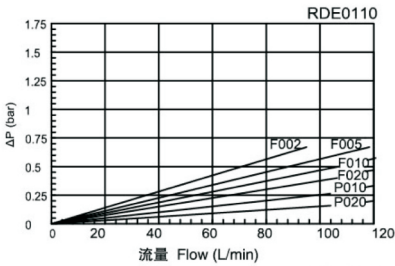
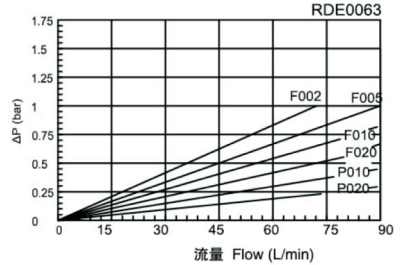
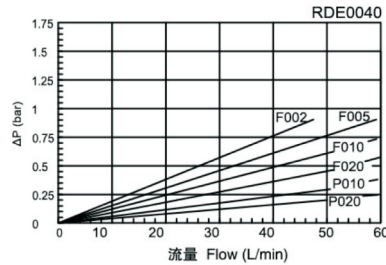
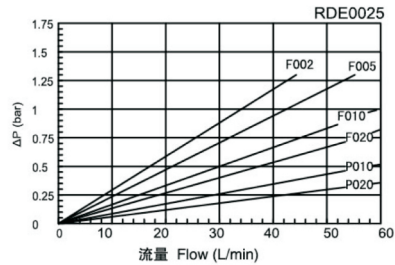
$$\Delta p = (\Delta p_{32} \times \text{viscosity of medium used}) / 32\text{cSt}$$

Filter pressure drop based on 32cSt fluid viscosity and 0.87 density.

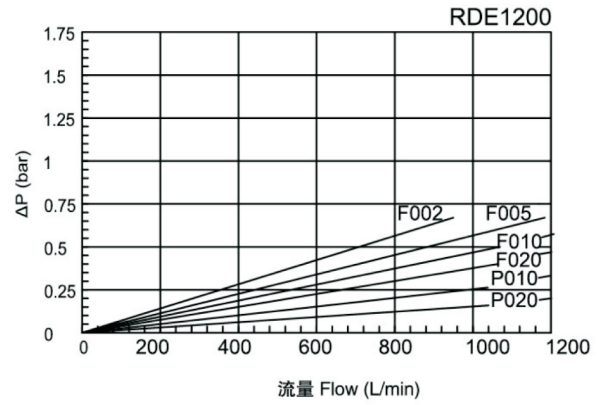
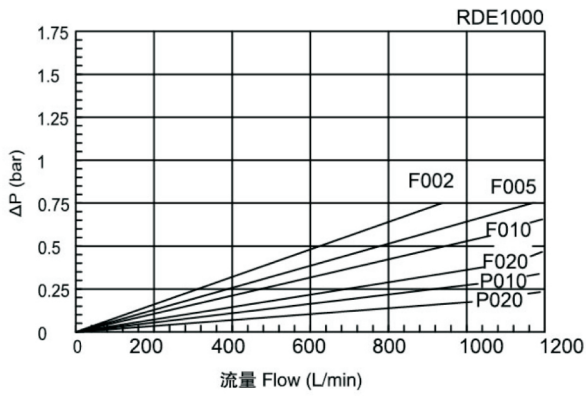
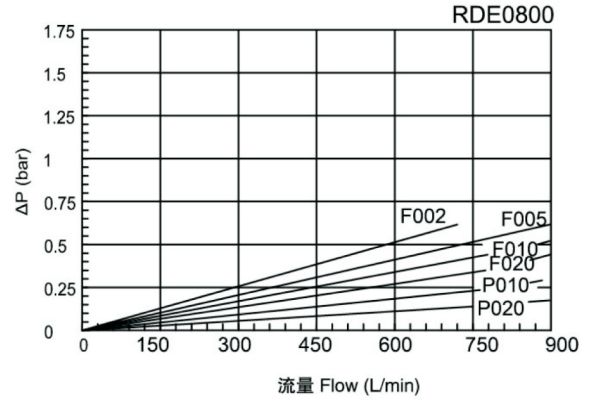
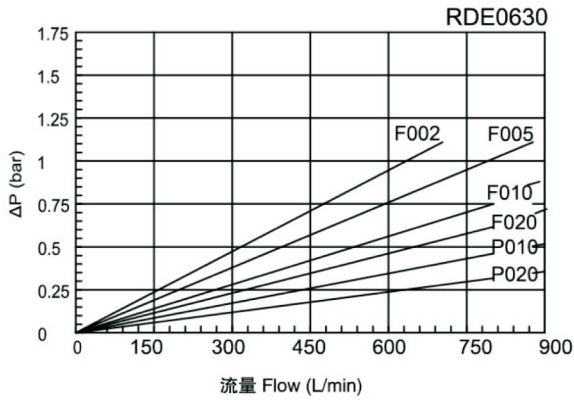
**壳体压降 Filter Housing Pressure Drop**



**玻纤和滤纸滤芯初始压降  
Clean Element Pressure Drop With Media F&P**

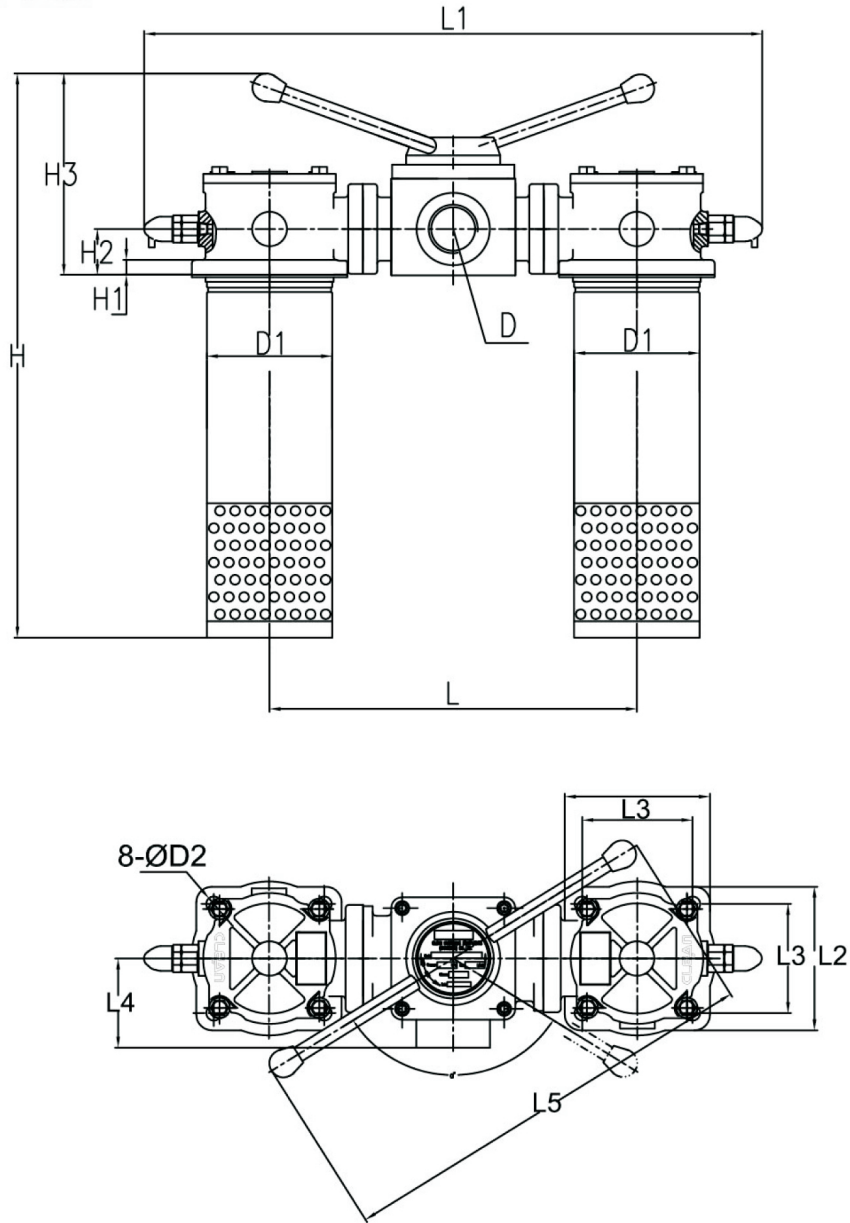


### 玻纤和滤纸滤芯初始压降 Clean Element Pressure Drop With Media F&P



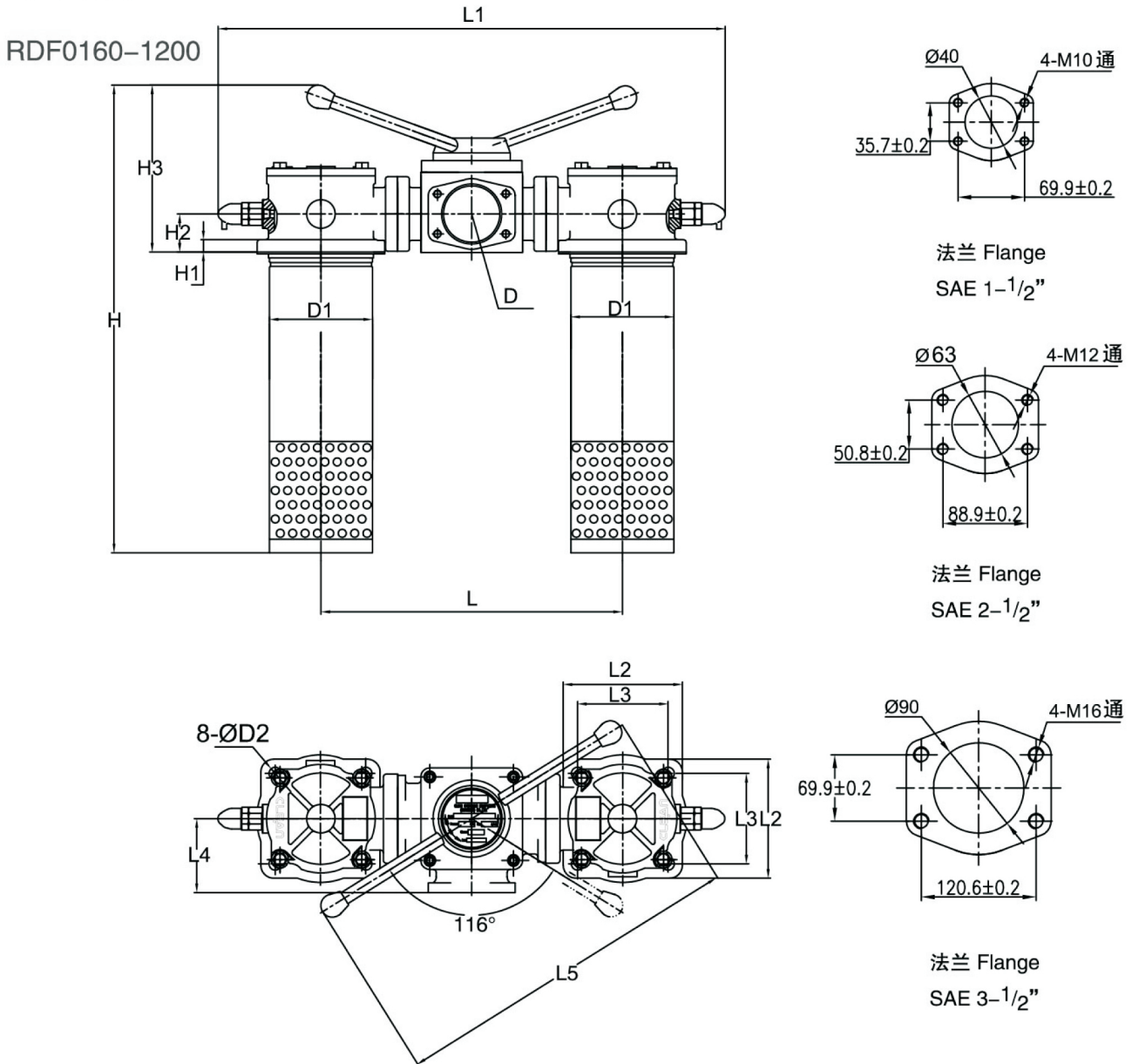
外形安裝尺寸 Dimensions

RDF0025-0100



型号 Type	D	D1	D2	H	H1	H1	H1	L	L1	L2	L3	L4	L5	a
RDF0025	G3/4 M27 × 2	75	9	249	10	25	122	224	388	90	70	53	265	135
RDF0040				280										
RDF0063	G1-1/4 M42 × 2	95	9	288	12	33	138	250	430	110	85	60	275	124
RDF0100				348										

### 外形安装尺寸 Dimensions



型号 Type	D	D1	D2	H	H1	H2	H3	L	L1	L2	L3	L4	L5
RDF 0160	SAE1-1/2"	110	13	425	15	40	160	320	566	125	95	81	350
RDF 0250				582									
RDF 0400	SAE2-1/2"	130		664	55	197	370	580	140	110	90	400	
RDF 0500	SAE3-1/2"	160		715	18	70	248	450	694	170	140	115	545
RDF 0530				743									
RDF 0500				853									
RDF 1000			1033										
RDF 1200				1233									

